

Linear motor with air bearings ELGL-LAS

FESTO



Wear-resistant!

In rough environments with high risk of wear: as a drive, the ELGL-LAS linear motor axis is at home there. And, with its innovative air cushion bearing with magnetic preloading, it still provides the highest levels of horizontal or vertical flexibility, precision and dynamic response – thanks to the closed, ready-to-install system of linear motor, air cushion bearing and measuring system.

Simply wear-resistant

Air cushion bearing technology lets the trolley float over the axes – contactless, without oil and grease. And the small air gap with its constant air flow prevents particles and dust from penetrating into the linear motor axis. And also: all strong magnetic fields are screened to keep metal parts and chips out.

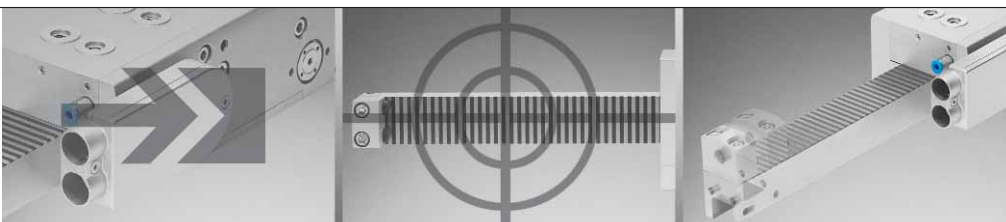
Simply precise

The high degree of levelness of the base allows very precise applications. In addition, the lin-

ear motor axis is designed to prevent cogging and therefore guarantees high synchronisation.

Simply high flexibility

The locking brake is integrated into the linear motor axis – thanks to the magnetically preloaded air cushion bearing. And with a variety of trolleys, you can implement several independent movements on one axis.



Highest precision

Pure dynamic response

Air cushion bearing as a brake

167.1. PSI →

Product Short Information

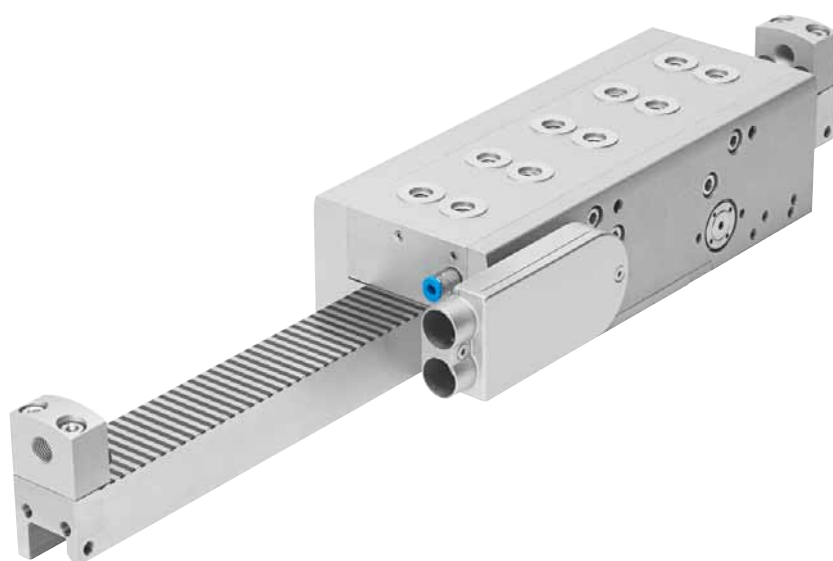
Linear motor with air bearings ELGL-LAS

Features

- Linear motor, measuring system and bearing integrated
- Air cushion bearing
- Measuring system protected, mounted on the bottom
- Multiple trollies possible on one axis
- Maintenance-free
- Wear-resistant
- Integrated holding brake
- Electrical components IP65
- End stops
- Optional: proximity switch, energy chain, shock absorber and vertical load compensation

In use

- Electronics, semiconductor and photovoltaics industry and measuring technology
- Scanner applications, medical technology, glass fibre production
- Handling of small and very small parts, e.g. clockmaking
- Wood-working industry: as transport axis in dusty environments



Technical data

Size		30	64	120			
Trolley size		S	S	M	S	M	L
Stroke	[mm]	To 740	To 1750	To 1650	To 1750	To 1650	To 1550
Speed	[m/s]	4	4	3.4	3.2	2	
Typical effective load	[kg]	3.5	14	22	26	30	40
Continuous torque	[N]		44	110	160	217	282330
Peak torque	[N]	44	119	164	240	310	450
Repetition accuracy	[mm]	±0.01	±0.01	±0.01	±0.01	±0.01	±0.01

Festo AG & Co. KG

Ruiter Strasse 82
73734 Esslingen
www.festo.com
Tel. +49 711 347-0
Fax +49 711 347-2144
service_international@festo.com